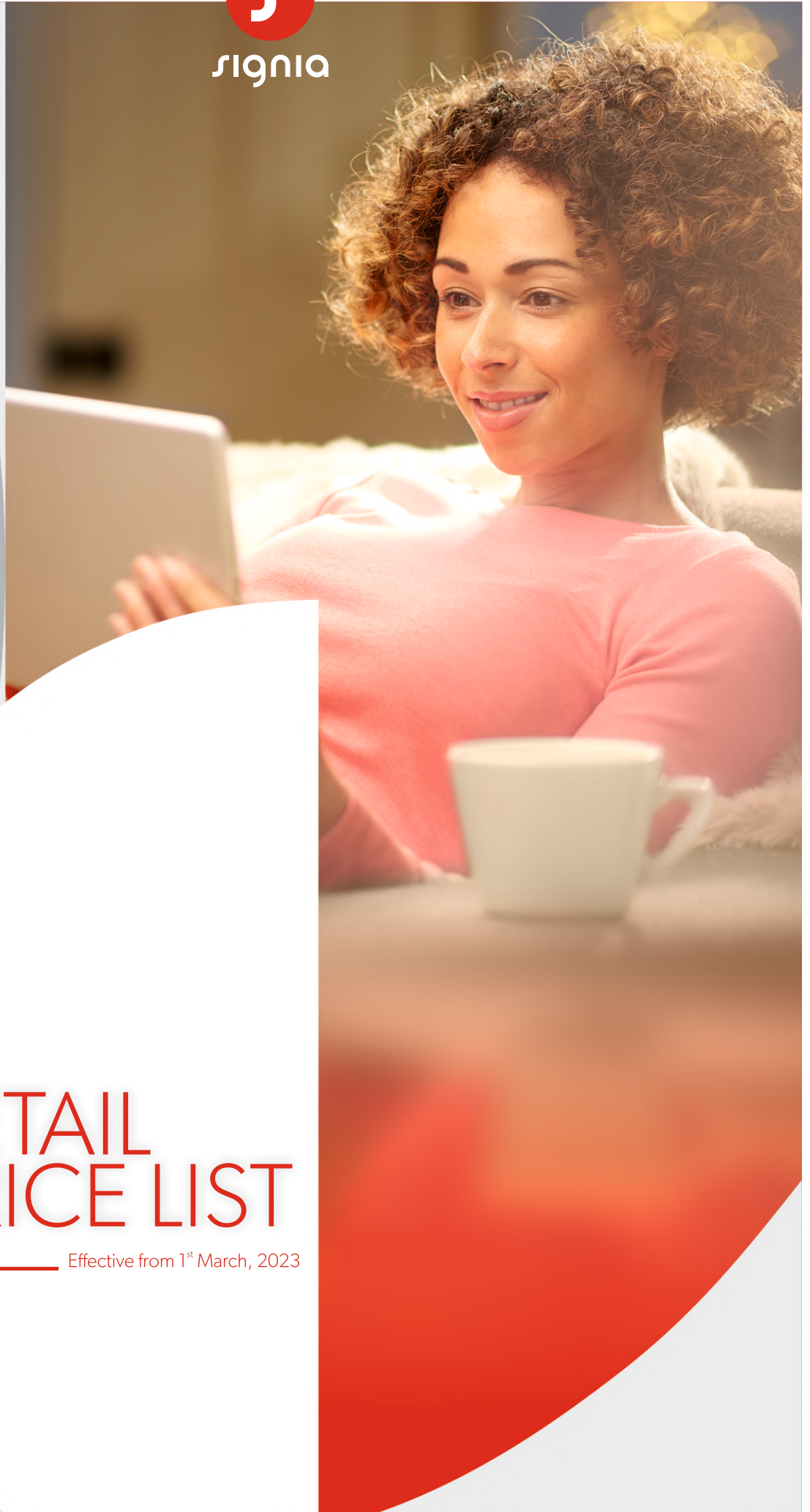




signia



# RETAIL PRICE LIST

---

Effective from 1<sup>st</sup> March, 2023





# Be Brilliant™

Signia is one of the leading hearing aid brands in the world. Our goal is to enhance human performance through iconic innovations that shape the prescription audio category. We refuse to accept hearing loss as a limitation. It's not about correcting a loss, it's about gaining an edge. Not just performing, but performing brilliantly. Not just hearing again, but hearing better than ever. Hearing every word, beat, and breath.

With Signia, you can Be Brilliant.

# CONTENTS

1) Augmented Xperience (AX)	4
2) Xperience (X)	10
3) Natural Experience (Nx)	15
4) primax (px)	16
5) Accessories	18

## Terms & Conditions

1. Signia Hearing Aids carry warranty as indicated in the price list.
2. Accessories (Chargers, miniReceiver, Remote Control, Streamers, CROS / BiCROS) carry 1 year warranty.
3. Power adaptor for some accessories will have to be procured separately.
4. Custom hearing aids prices include shelling charges.
5. HP miniReceiver customization charges are included in the RIC pricing.
6. RIC / BTE instruments will be supplied in standard beige colour. Other colour housing options for RIC / BTE models are subject to a delivery lead time of 3 weeks.
7. Prices of color conversion kit may vary depending on hearing aid model.
8. Hearing Aids are exempted from GST.
9. GST applicable on accessories. Retail prices of accessories are inclusive of GST.
10. The pricelist and product specifications are subject to change without prior notice.

*Sivantos India recommends all its valued consumers to seek a hearing care professional's opinion on the best suited hearing instrument. Online purchase may not necessarily give you the desired results.*

# AX Platform Features

Features	Information	Performance levels				
		7AX	5AX	3AX	2AX	1AX
<b>Dynamic Soundscape Processing 2.0</b>	Dynamic Soundscape Processing takes sound processing to a more precise level by including motion data for a more realistic sound adapted to everyday life.	••••	••••	••••	•••	•••
<b>Augmented Focus™</b>	Separates the focus sound (speech) from surroundings, creating a clear contrast between the two, which makes it easier to follow conversations.	✓	✓	✓	✓	✓
<b>Acoustic Sensors</b>	The redesigned acoustic sensors can detect more variables of sound than ever before, providing more accurate information about the environment.	✓	✓	✓	✓	✓
<b>e2e wireless 4.0</b>	Control coupling, synchronization, binaural directionality, eWindscreen binaural, Spatial Speech Focus, CROS/ BiCROS.	✓	✓	✓	✓	✓
<b>Motion Sensor</b>	An integrated motion sensor detects whether the wearer is walking, running or sitting still. This motion data complements the acoustic data to optimize Dynamic Soundscape Processing 2.0.	✓	✓	✓		
<b>OVP™ (Own Voice Processing)</b>	Own Voice Processing (OVP™) utilizes real-time recognition of the wearer's voice to deliver a natural own-voice impression. Available for RIC/BTE devices with e2e wireless in binaural fittings.	✓	✓	✓		
<b>Sound Clarity</b>	Sound Clarity provides lifelike sound which covers the full spectrum of wearing situations.	••••	••••	•••	•••	••
<b>Signal processing / Gain &amp; MPO</b>	Channels/handles in Connexx. For Signia AX, channels are per processing chain (Focus/Surroundings).	48/20	32/16	24/12	16/8	16/8
<b>Hearing Programs</b>	Number of programs configurable in Connexx.	6	6	6	4	4
<b>Extended dynamic range</b>	117 dB 24 bit processing for enhanced digital encoding of soft and loud sounds.	✓	✓	✓	✓	✓
<b>Speech and noise management</b>	Reduces listening effort using sophisticated sound processing	✓	✓	✓	✓	✓
<b>SoundSmoothing™</b>	Reduces the annoyance of sudden loud impact sound such as when handling glassware.	✓	✓	✓	✓	
<b>Feedback cancellation</b>	High speed monitoring and control of feedback in individual processing channels.	✓	✓	✓	✓	✓
<b>HD Music</b>	Preset programs for enhanced enjoyment of non-streamed music.	3	3	1	1	
<b>eWindScreen</b>	Reduces the annoyance of wind noise when outdoors.	✓	✓	✓	✓	
<b>Extended bandwidth</b>	12 kHz bandwidth for enhanced processing of high-frequency speech and environmental sounds.	✓				
<b>EchoShield</b>	Dedicated program for reverberant environments.	✓	✓			
<b>Speech Quality</b>	Speech Quality delivers improved speech understanding and communication ease in noise.	••••	••••	•••	•••	•••
<b>Binaural Directionality</b>	Directionality provides scientifically proven enhanced speech understanding in noise. Available for bilateral fittings with directional microphones and e2e wireless link.	✓	✓	✓		

1) In Universal program: Automatic mic beam to the right / left / rear directions.  
 2) In Universal program: Automatic mic beam to the rear, surround mode for side speech. In manual programs, microphone beam to the right / left / rear directions.



Features	Information	Performance levels				
		7AX	5AX	3AX	2AX	1AX
<b>Wireless CROS/BiCROS</b>	Requires CROS transmitters.	✓	✓	✓	✓	✓
<b>Frequency compression</b>	Improves the detection of speech sounds for wearers with reduced high frequency hearing thresholds. Frequency compression is selectively activated based on audiological criteria.	✓	✓	✓	✓	✓
<b>Spatial SpeechFocus</b>	Depending on the direction of the dominant speech source, Spatial SpeechFocus steers the directional beam to the left, right, or behind the wearer automatically in a car situation, or in a dedicated "Strolling" program. Available for bilateral fittings with directional microphones and e2e wireless link.	✓ <sup>1)</sup>	✓ <sup>2)</sup>			
<b>Wearer Interaction</b>	Technically inclined wearers may appreciate having extra control over their hearing aids. Signia Augmented Xperience hearing aids offer these wearers a comprehensive range of adjustment options via the Signia App.	••••	••••	••••	••••	••••
<b>Signia Assistant<sup>1</sup></b>	Signia Assistant offers wearers instant 24/7 support and troubleshooting around the clock. It provides detailed information in Connexx to address each client's fine-tuning needs more precisely	✓	✓	✓	✓	✓
<b>Signia app (iOS and Android)</b>	The new Signia app combines all functionalities of previous apps (touchControl, myControl, myHearing app). The functionality offered in the app is automatically customized depending on the connected hearing aid.	✓	✓	✓	✓	✓
<b>Adaptive Streaming Volume</b>	Speech intelligibility weighted adaptation of the streaming volume depending on ambient noise.	✓	✓	✓	✓	✓
<b>Spatial Configurator</b>	Spatial Configurator is part of the Signia app and allows the wearer to adjust the direction of the microphone beam.	✓	✓			
<b>Direct streaming for iOS</b>	Signia Augmented Xperience hearing aids can be connected directly to Apple devices for phone calls and audio streaming – without additional accessories.	✓	✓	✓	✓	✓
<b>Direct streaming for Android</b>	Direct audio streaming from ASHA compatible Android devices to Bluetooth enabled Augmented Xperience hearing aids.	✓	✓	✓	✓	✓
<b>StreamLine TV accessory</b>	Stream high quality stereo sound directly from a TV to Bluetooth equipped Augmented Xperience hearing aids.	✓	✓	✓	✓	✓
<b>StreamLine Mic accessory</b>	Stream high quality stereo sound directly from any Bluetooth device (Android devices, older Apple devices, other smartphones, PCs, laptops, etc.) to Bluetooth equipped Augmented Xperience hearing aids.	✓	✓	✓	✓	✓
<b>Tinnitus</b>	A choice of tinnitus treatments based on amplified notch therapy or traditional noise therapy signals. It is even possible to combine the two approaches.	✓	✓	✓	✓	
<b>Notched Amplification Therapy</b>	Innovative tinnitus therapy delivered via everyday amplification.	✓	✓	✓	✓	
<b>Smart Optimizer and Data Logging</b>	Smart Optimizer (found under Data Logging) provides tailored fine-tuning recommendations based on an analysis of the wearer's usage of the hearing aid.	✓	✓	✓	✓	✓
<b>Acclimatization manager</b>	Allows the wearer to benefit from enhanced audibility in the longer term, while enjoying optimal device acceptance when initially fitted.	✓	✓	✓	✓	✓
<b>InSituGram</b>	Allows quick and convenient screening audiograms and checking of thresholds while the hearing aids are worn.	✓	✓	✓	✓	✓
<b>AutoFit</b>	Automatically provides an optimized real-ear insertion gain (REIG) setting without the need to manually match targets. The new IMC2 standard expands the range of REM equipment which supports AutoFit with Connexx and Noah 4.5.1 or higher.	✓	✓	✓	✓	✓
<b>TeleCare</b>	TeleCare provides remote services including additional tools to follow-up with patients. In addition, user engagement and autonomy can be increased via the Signia app.	✓	✓	✓	✓	✓
<b>Remote Services</b>	Includes TeleCare Dashboard, Remote Fine Tuning, CareChat (incl. text messages, phone calls and video calls), virtual follow-up.		✓	✓	✓	✓



**A revolution in augmented hearing**



Product Name	Form Factor	Channels	Fitting Range (dB)	Warranty (Years)	Unit Price (₹)
<b>AUGMENTED XPERIENCE</b>					
<b>KIT STYLETTO AX *</b>					
<b>Kit Styletto 7AX</b>	Slim-RIC	48	10 - 110	4	6,49,990
<b>Kit Styletto 5AX</b>	Slim-RIC	32	10 - 110	4	4,24,990
<b>Kit Styletto 3AX</b>	Slim-RIC	24	10 - 110	2	3,09,990
<b>Kit Styletto 2AX</b>	Slim-RIC	16	10 - 110	2	1,29,990
<b>Kit Styletto 1AX</b>	Slim-RIC	16	10 - 110	2	99,990
<b>KIT PURE C&amp;G AX / KIT PURE C&amp;G T AX*</b>					
<b>Kit Pure C&amp;G 7AX / T 7AX</b>	RIC	48	10 - 115	4	7,09,990
<b>Kit Pure C&amp;G 5AX / T 5AX</b>	RIC	32	10 - 115	4	4,41,990
<b>Kit Pure C&amp;G 3AX / T 3AX</b>	RIC	24	10 - 115	2	3,19,990
<b>Kit Pure C&amp;G 2AX / T 2AX</b>	RIC	16	10 - 115	2	1,49,990
<b>Kit Pure C&amp;G 1AX / T 1AX</b>	RIC	16	10 - 115	2	1,13,990
<b>PURE C&amp;G AX / PURE C&amp;G T AX</b>					
<b>Pure C&amp;G 7AX / T 7AX</b>	RIC	48	10 - 115	4	3,61,990
<b>Pure C&amp;G 5AX / T 5AX</b>	RIC	32	10 - 115	4	2,27,990
<b>Pure C&amp;G 3AX / T 3AX</b>	RIC	24	10 - 115	2	1,66,990
<b>Pure C&amp;G 2AX / T 2AX</b>	RIC	16	10 - 115	2	81,990
<b>Pure C&amp;G 1AX / T 1AX</b>	RIC	16	10 - 115	2	63,990
<b>PURE 312 AX</b>					
<b>Pure 312 7AX</b>	RIC	48	10 - 115	4	3,14,990
<b>Pure 312 5AX</b>	RIC	32	10 - 115	4	1,99,990
<b>Pure 312 3AX</b>	RIC	24	10 - 115	2	1,41,990
<b>Pure 312 2AX</b>	RIC	16	10 - 115	2	64,990
<b>Pure 312 1AX</b>	RIC	16	10 - 115	2	46,990

\* Kit Includes 2 units of hearing aids and a standard charger.

Note:  
The fitting range is completely dependent on the receiver matrix of the hearing aid



**A revolution in augmented hearing**



Product Name	Form Factor	Channels	Fitting Range (dB)	Warranty (Years)	Unit Price (₹)
<b>AUGMENTED XPERIENCE</b>					
<b>KIT INSIO C&amp;G AX*</b>					
<b>Kit Insio C&amp;G 7AX</b>	ITC / ITE	48	10 - 110	4	7,09,990
<b>Kit Insio C&amp;G 5AX</b>	ITC / ITE	32	10 - 110	4	4,41,990
<b>Kit Insio C&amp;G 3AX</b>	ITC / ITE	24	10 - 110	2	3,19,990
<b>Kit Insio C&amp;G 2AX</b>	ITC / ITE	16	10 - 110	2	1,49,990
<b>Kit Insio C&amp;G 1AX</b>	ITC / ITE	16	10 - 110	2	1,13,990
<b>INSIO C&amp;G AX</b>					
<b>Insio C&amp;G 7AX</b>	ITC / ITE	48	10 - 110	4	3,61,990
<b>Insio C&amp;G 5AX</b>	ITC / ITE	32	10 - 110	4	2,27,990
<b>Insio C&amp;G 3AX</b>	ITC / ITE	24	10 - 110	2	1,66,990
<b>Insio C&amp;G 2AX</b>	ITC / ITE	16	10 - 110	2	81,990
<b>Insio C&amp;G 1AX</b>	ITC / ITE	16	10 - 110	2	63,990
<b>INTUIS 4</b>					
<b>Intuis 4.2 (SP/P/M)</b>	BTE	16	10 - 120	2	41,990
<b>Intuis 4.1 (SP/P/M)</b>	BTE	16	10 - 120	2	35,990
<b>Intuis 4.0 (SP/P/M)**</b>	BTE	12	10 - 120	2	28,990



**Styletto AX**



**Pure C&G AX**



**INSIO C&G AX**



**PURE 312 AX**



**INTUIS 4**

\* Kit Includes 2 units of hearing aids and a standard charger.

\*\* Direct Streaming option not available in Intuis 4.0







Note:  
The fitting range is completely dependent on the receiver matrix of the hearing aid



**A revolution in augmented hearing**



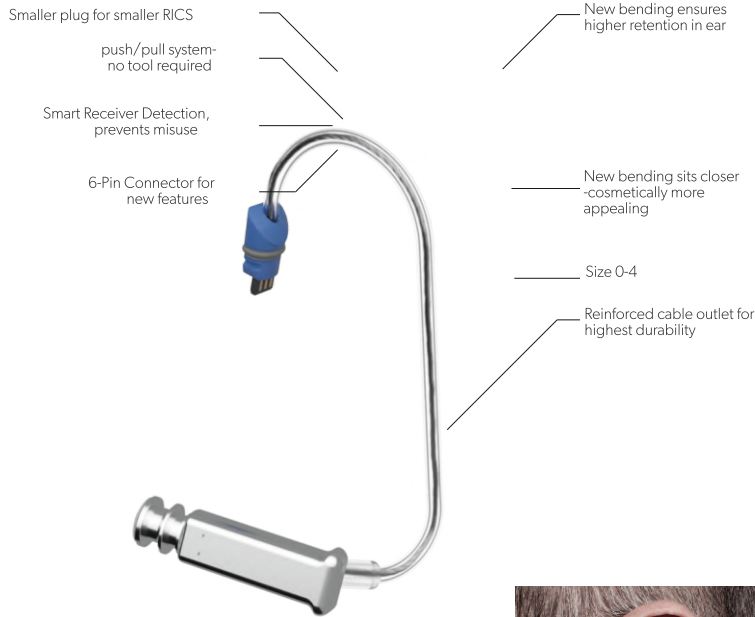
Product Name	Form Factor	Battery Size/Type	Warranty (Years)	Unit Price (₹)
<b>CROS/BiCROS</b>				
<b>Styletto CROS Kit 7AX</b>	RIC	Li-ion	4 yrs For Hearing Aid 1 yr for CROS	3,60,990
<b>Styletto CROS Kit 5AX</b>	RIC	Li-ion	4 yrs For Hearing Aid 1 yr for CROS	2,48,490
<b>Styletto CROS Kit 3AX</b>	RIC	Li-ion	2 yrs For Hearing Aid 1 yr for CROS	1,90,990
<b>Styletto CROS Kit 2AX</b>	RIC	Li-ion	2 yrs For Hearing Aid 1 yr for CROS	1,00,990
<b>Styletto CROS Kit 1AX</b>	RIC	Li-ion	2 yrs For Hearing Aid 1 yr for CROS	85,990
<b>CROS/BiCROS</b> (Pure C&G AX Transmitter)	RIC	Li-ion	1	35,990
<b>CROS/BiCROS</b> (Pure 312 AX Transmitter)	RIC	312	1	29,490

Product Name		Warranty (Year)	Unit Price (₹)
<b>CHARGERS</b>			
<b>Styletto AX Charger Case</b>		1	11,990
<b>Styletto Dry&amp;Clean Charger</b>		1	11,990
<b>Insio AX Charger Case</b>		1	11,990
<b>Dry &amp; Clean Charger RIC</b>		1	11,990
<b>Portable Charger RIC</b>		1	7,990
<b>Standard Charger RIC</b>		1	5,990



## Better physical fit and on-ear attractiveness

Our new EarWear 3.0 offers a higher physical fit rate, improved cosmetics and better retention.



Your EarWear 3.0 advantages at a glance:

**Higher physical fit rate**

The combination of smaller receiver cross sections, softer eartips providing a smaller receiver front, and a new cable geometry results in major physical fit rate improvements for the miniReceiver 3.0 portfolio.

**Cosmetically appealing**

Improved cable/tube bending and in-ear position ensures a closer fit on the ear, making it less visible. Every variant is available in the lengths 0-4.

**Better retention**

A special bending of the cable/tube and its outlet locks the acoustic coupling reliably into the ear canal, with no lateral migration and no need for an anchor.

**New eartips**

Compatible with miniReceiver 3.0 and ThinTube 3.0 and easier for your clients to exchange (compared to click domes).

**Smaller hearing aids**

The introduction of a substantially smaller plug allows for smaller RIC designs overall.

**Improved usability**

The proven design makes click domes much easier for consumers to exchange.



miniReceiver 3.0 Cable Bending 10/10 fit correctly-out of the box

### Acoustical and physical fitting performance of miniReceiver 3.0 portfolio

Physical fit rate	↗		↗		↕		↘	
Acoustical performance 3.0	↗		↗		↘		↗	
	<b>S</b>		<b>M</b>		<b>P</b>		<b>HP</b>	
	2ccm coupler	Ear simulator	2ccm coupler	Ear simulator	2ccm coupler	Ear simulator	2ccm coupler	Ear simulator
OSPL 90 (Peak)	110 dB SPL	120 dB SPL	119 dB SPL	129 dB SPL	122 dB SPL	131 dB SPL	131 dB SPL	138 dB SPL
138 dB SPL	46 dB	57 dB	60 dB	70 dB	65 dB	75 dB	75 dB	83 dB

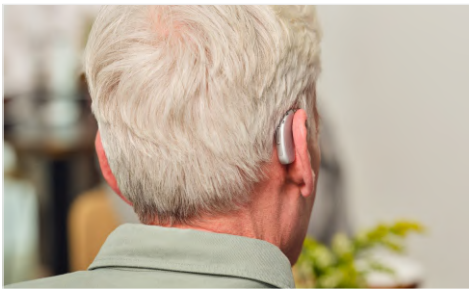
Different values for Pure 312 AX

# Signia Xperience Platform Features

Features	Information	Performance levels				
		7X	5X	3X	2X	1X
<b>YourSound Technology</b>	Redesigned acoustic sensors plus an integrated motion sensor provide detailed information about where the wearers are and what they are doing. Dynamic Soundscape Processing and Own Voice Processing (OVP™), process this information delivering the most natural and personalized sound.	•••••	•••••	•••••	•••••	•••••
<b>Acoustic Sensors</b>	The redesigned acoustic sensors can detect more variables of sound than ever before, providing more accurate information about the environment.	✓	✓	✓	✓	✓
<b>Motion Sensor</b>	An integrated motion sensor detects whether the wearer is walking, running or not. This information is used for Dynamic Soundscape Processing.	✓	✓	✓	-	-
<b>Dynamic Soundscape Processing<sup>1</sup></b>	Steers Sound Clarity and Sound Quality features for natural sound and speech in every situation from any direction, even when moving.	•••••	•••••	•••••	•••••	•••••
<b>OVP™ (Own Voice Processing)<sup>1</sup></b>	Own Voice Processing (OVP™) utilizes real-time recognition of the wearer's voice to deliver a natural own-voice impression. Available for RIC/BTE devices with e2e wireless in binaural fittings.	•••••	•••••	•••••	-	-
<b>Sound Clarity</b>	Sound Clarity provides lifelike sound which covers the full spectrum of wearingsituations.	•••••	•••••	•••••	•••••	•••••
<b>Signal processing / Gain &amp; MPO</b>	Channels/handles in Connexx.	48/20	32/16	24/12	16/8	16/8
<b>Hearing Programs</b>	Number of programs configurable in Connexx	6	6	6	4	4
<b>Extended dynamic range</b>	24 bit processing for enhanced digital encoding of soft and loud sounds.	✓	✓	✓	✓	✓
<b>Speech and noise management</b>	Reduces listening effort using sophisticated sound processing.	✓	✓	✓	✓	✓
<b>SoundSmoothing™</b>	Reduces the annoyance of sudden loud impact sound such as when handling glassware.	✓	✓	✓	✓	-
<b>Feedback cancellation</b>	High speed monitoring and control of feedback in individual processing channels.	✓	✓	✓	✓	✓
<b>HD Music</b>	Preset programs for enhanced enjoyment of non-streamed music.	3	3	1	1	-
<b>eWindScreen</b>	Reduces the annoyance of wind noise when outdoors. Binaural eWindScreen requires e2e wireless link. 7X, - Binaural Auto in Universal program 5X, - Binaural 3X, 2X, - Monaural	✓	✓	✓	✓	-
<b>Extended bandwidth</b>	12 kHz bandwidth for enhanced processing of high-frequency speech and environmental sounds.	✓	-	-	-	-
<b>EchoShield</b>	Dedicated program for reverberant environments.	✓	-	-	-	-
<b>Speech Quality</b>	Speech Quality delivers improved speech understanding and communication ease in noise.	•••••	•••••	•••	••	••
<b>Directionality</b>	Directionality provides scientifically proven enhanced speech understanding in noise. Available for bilateral fittings with directional microphones and e2e wireless link. 7X, 5X, 3X - Binaural processing Automatic / Adaptive 2X, 1X - Automatic / Adaptive	✓	✓	✓	✓	✓
<b>Binaural OneMic Directionality</b>	Advanced binaural beamforming technology for small in-the-ear instruments with only one microphone. Available for Silk X.	✓	✓	✓	-	-
<b>Wireless CROS / BiCROS<sup>2</sup></b>	Requires CROS transmitters: CROS Pure 312 X or CROS Pure Charge&Go X for Bluetooth enabled fittings CROS Silk X for fittings without Bluetooth	✓	✓	✓	-	-
<b>Frequency compression</b>	Improves the detection of speech sounds for wearers with reduced high frequency hearing thresholds. Frequency compression is selectively activated based on audiological criteria.	✓	✓	✓	✓	✓

Features	Information	Performance levels				
		7X	5X	3X	2X	1X
<b>Spatial SpeechFocus</b>	Depending on the direction of the dominant speech source, Spatial SpeechFocus 7X - In Universal program: automatic mic beam to the right / left / rear directions. 5X - In Universal program: automatic mic beam to the rear, surround mode for side speech. In manual programs, microphone beam to the right/left/ rear directions.	✓	✓	-	-	-
<b>Wearer Interaction</b>	Technically inclined wearers may appreciate having extra control over their hearing aids. Signia Xperience hearing aids offer these wearers a comprehensive range of adjustment options via the Signia App.	••••	••••	••••	••••	••••
<b>Signia Assistant<sup>1</sup></b>	Signia Assistant offers the wearers instant 24/7 support and troubleshooting around the clock. It provides detailed information in Connexx to address each client's fine-tuning needs more precisely.	✓	✓	✓	✓	✓
<b>Signia App (iOS and Android)</b>	The new Signia App combines all functionalities of previous apps (touchControl, myControl, myHearing App). The functionality offered in the app is automatically customized depending on the connected hearing aid.	✓	✓	✓	✓	✓
<b>Adaptive Streaming Volume</b>	Speech intelligibility weighted adaptation of the streaming volume depending on ambient noise.	✓	✓	✓	✓	✓
<b>Spatial Configurator</b>	Spatial Configurator is part of the Signia App and allows the wearer to adjust the direction of the microphone beam.	✓	✓	-	-	-
<b>Direct Streaming</b>	Signia Xperience hearing aids can be connected directly to Apple devices for phone calls and audio streaming – without additional accessories. For Android devices the StreamLine Mic accessory makes streaming easy. The Stream Line TV accessory sends high quality stereo sound from the wearer's TV directly to the Xperience hearing aids. Available for Bluetooth hearing aids.	✓	✓	✓	✓	✓
<b>Made for iPhone</b>	Direct audio streaming from compatible iOS devices to Bluetooth enabled Xperience hearing aids.	✓	✓	✓	✓	✓
<b>StreamLine TV accessory</b>	Stream high quality stereo sound directly from a TV to Bluetooth equipped Xperience hearing aids.	✓	✓	✓	✓	✓
<b>StreamLine Mic accessory</b>	Stream high quality stereo sound directly from any Bluetooth device (Android devices, older Apple devices, other smartphones, PCs, laptops, etc.) to Bluetooth equipped Xperience hearing aids.	✓	✓	✓	✓	✓
<b>Tinnitus</b>	A choice of tinnitus treatments based on amplified notch therapy or traditional noise therapy signals. It is even possible to combine the two approaches.	✓	✓	✓	✓	-
<b>Notched Amplification Therapy</b>	Innovative tinnitus therapy delivered via everyday amplification.	✓	✓	✓	✓	-
<b>Tinnitus noise therapy signal</b>	A set of fully configurable stationary noise signals and the modulated ocean wave sounds	✓	✓	✓	✓	-
<b>Fitting</b>	Connexx fitting software offers a number of advanced tools to suit every Hearing Care Professional's workflow.	✓	✓	✓	✓	✓
<b>Smart Optimizer and Data Logging</b>	Smart Optimizer (found under Data Logging) provides tailored fine-tuning recommendations based on an analysis of the wearer's usage of the hearing aid.	✓	✓	✓	✓	✓
<b>Acclimatization manager</b>	Allows the wearer to benefit from enhanced audibility in the longer term, while enjoying optimal device acceptance when initially fitted.	✓	✓	✓	✓	✓
<b>InSituGram</b>	Allows quick and convenient screening audiograms and checking of thresholds while the hearing aids are worn.	✓	✓	✓	✓	✓
<b>AutoFit</b>	Automatically provides an optimized real-ear insertion gain (REIG) setting without the need to manually match targets. The new IMC2 standard expands the range of REM equipment which supports AutoFit with Connexx and Noah 4.5.1 or higher.	✓	✓	✓	✓	✓
<b>TeleCare</b>	TeleCare provides remote services including additional tools to follow-up the patients. In addition, the user engagement and autonomy can be increased via the Signia app.	✓	✓	✓	✓	✓
<b>Remote Services</b>	Includes TeleCare Dashboard, Remote Fine Tuning, CareChat (incl. text messages, phone calls and video calls), virtual follow-up.	✓	✓	✓	✓	✓
<b>Signia App</b>	The Signia App provides TeleCare specific functionalities like Hearing Lessons, Daily Satisfaction Ratings, Tutorials and FAQs.	✓	✓	✓	✓	✓

<sup>1</sup> Not available with Silk X <sup>2</sup> Not available with Styletto X



Signia Xperience

Hear what matters to you



Product Name	Form Factor	Channels	Fitting Range (dB)	Warranty (Years)	Unit Price (₹)
<b>XPERIENCE</b>					
<b>KIT ACTIVE*</b>					
<b>Active Pro</b>	ITE	48	10 - 80	4	2,99,990
<b>Active</b>	ITE	16	10 - 80	2	1,49,990
<b>KIT STYLETTO X *</b>					
<b>Kit Styletto 7X</b>	RIC	48	10 - 110	4	6,47,990
<b>Kit Styletto 5X</b>	RIC	32	10 - 110	4	4,16,990
<b>Kit Styletto 3X</b>	RIC	24	10 - 110	2	3,00,990
<b>Kit Styletto 2X</b>	RIC	16	10 - 110	2	1,29,990
<b>Kit Styletto 1X</b>	RIC	16	10 - 110	2	99,990
<b>KIT MOTION C&amp;G X / KIT MOTION C&amp;G P X / KIT MOTION C&amp;G SP X*</b>					
<b>Kit Motion C&amp;G 7X / P 7X / SP 7X</b>	BTE	48 / 48 / 34	10 - 120	4	6,19,990
<b>Kit Motion C&amp;G 5X / P 5X / SP 5X</b>	BTE	32 / 32 / 32	10 - 120	4	3,89,990
<b>Kit Motion C&amp;G 3X / P 3X / SP 3X</b>	BTE	24 / 24 / 24	10 - 120	2	2,19,990
<b>Kit Motion C&amp;G 2X / P 2X / SP 2X</b>	BTE	16 / 16 / 16	10 - 120	2	1,29,990
<b>Kit Motion C&amp;G 1X / P 1X / SP 1X</b>	BTE	16 / 16 / 16	10 - 120	2	99,990
<b>MOTION C&amp;G X / MOTION C&amp;G P X / MOTION C&amp;G SP X</b>					
<b>Motion C&amp;G 7X / P 7X / SP 7X</b>	BTE	48 / 48 / 34	10 - 120	4	3,16,990
<b>Motion C&amp;G 5X / P 5X / SP 5X</b>	BTE	32 / 32 / 32	10 - 120	4	2,01,990
<b>Motion C&amp;G 3X / P 3X / SP 3X</b>	BTE	24 / 24 / 24	10 - 120	2	1,12,990
<b>Motion C&amp;G 2X / P 2X / SP 2X</b>	BTE	16 / 16 / 16	10 - 120	2	71,990
<b>Motion C&amp;G 1X / P 1X / SP 1X</b>	BTE	16 / 16 / 16	10 - 120	2	56,990

\* Kit Includes 2 units of hearing aids and a standard charger.

Note:  
The fitting range is completely dependent on the receiver matrix of the hearing aid



Signia Active Pro



Motion Charge&Go SP X

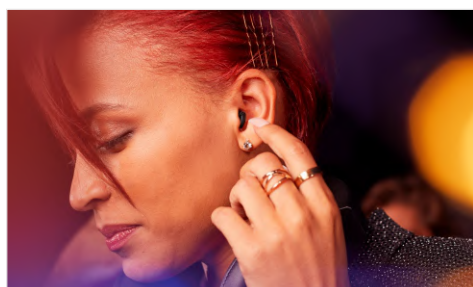


PURE C&G X



SILK X





Signia Xperience

Hear what matters to you



Product Name	Form Factor	Channels	Fitting Range (dB)	Warranty (Years)	Unit Price (₹)
<b>XPERIENCE</b>					
<b>KIT PURE C&amp;G X*</b>					
<b>Kit Pure C&amp;G 7X</b>	RIC	48	10 - 110	4	6,49,990
<b>Kit Pure C&amp;G 5X</b>	RIC	32	10 - 110	4	3,99,990
<b>Kit Pure C&amp;G 3X</b>	RIC	24	10 - 110	2	2,91,990
<b>Kit Pure C&amp;G 2X</b>	RIC	16	10 - 110	2	1,03,990
<b>Kit Pure C&amp;G 1X</b>	RIC	16	10 - 110	2	83,990
<b>PURE C&amp;G X</b>					
<b>Pure C&amp;G 7X</b>	RIC	48	10 - 110	4	3,31,990
<b>Pure C&amp;G 5X</b>	RIC	32	10 - 110	4	2,06,990
<b>Pure C&amp;G 3X</b>	RIC	24	10 - 110	2	1,52,990
<b>Pure C&amp;G 2X</b>	RIC	16	10 - 110	2	54,990
<b>Pure C&amp;G 1X</b>	RIC	16	10 - 110	2	44,990
<b>PURE 312 X</b>					
<b>Pure 312 7X</b>	RIC	48	10 - 115	4	2,99,990
<b>Pure 312 5X</b>	RIC	32	10 - 115	4	1,79,990
<b>Pure 312 3X</b>	RIC	24	10 - 115	2	1,29,990
<b>Pure 312 2X</b>	RIC	16	10 - 115	2	45,990
<b>Pure 312 1X</b>	RIC	16	10 - 115	2	38,990
<b>SILK X</b>					
<b>Silk 7X</b>	CIC	48	10 - 80	4	2,99,990
<b>Silk 5X</b>	CIC	32	10 - 80	4	1,79,990
<b>Silk 3X</b>	CIC	24	10 - 80	2	1,29,990
<b>Silk 2X</b>	CIC	16	10 - 80	2	59,990
<b>Silk 1X</b>	CIC	16	10 - 80	2	43,990

\* Kit Includes 2 units of hearing aids and a standard charger.

Note:

The fitting range is completely dependent on the receiver matrix of the hearing aid



Signia Xperience

Hear what matters to you



Product Name	Form Factor	Warranty (Year)	Unit Price (₹)
--------------	-------------	-----------------	----------------

**CROS/BiCROS**

<b>CROS/BiCROS Pure Charge&amp;Go X Transmitter</b>	RIC	1	35,990
<b>CROS/BiCROS Pure 312 X Transmitter</b>	RIC	1	29,490
<b>CROS/BiCROS Silk X Transmitter</b>	RIC	1	29,490

Product Name	Warranty (Year)	Unit Price (₹)
--------------	-----------------	----------------

**CHARGERS**

<b>Styletto X Charger Case</b>		1	11,990
<b>Inductive Charger II</b> (Pure C&G X and Motion C&G X) - 7,5,3		1	11,990
<b>Active Charger Case</b>		1	11,990
<b>Dry&amp;Clean Charger</b> (Motion C&G X) (P/SP)		1	11,990
<b>Inductive Charger E</b> (Pure C&G X and Motion C&G X) - 2,1		1	9,990
<b>Standard Charger</b> (Motion C&G X) (P/SP)		1	5,990



# Signia Nx

## Outstanding Soundscape Processing



Product Name	Form Factor	Channels	Fitting Range (dB)	Warranty (Years)	Unit Price (₹)
<b>SIGNIA Nx</b>					
<b>INSIO Nx</b>					
<b>Insio 7Nx</b>	ITE / ITC* / CIC / IIC	48	10 - 110	4	2,99,990
<b>Insio 5Nx</b>	ITE / ITC* / CIC / IIC	32	10 - 110	4	1,79,990
<b>Insio 3Nx</b>	ITE / ITC* / CIC / IIC	24	10 - 110	2	1,04,990
<b>Insio 2Nx</b>	ITE / ITC* / CIC / IIC	16	10 - 110	2	57,990
<b>Insio 1Nx</b>	ITE / ITC* / CIC / IIC	16	10 - 110	2	41,990

\*ITE & ITC - Available with Bluetooth / without Bluetooth

Product Name	Form Factor	Warranty (Year)	Unit Price (₹)
<b>CROS/BiCROS</b>			
<b>CROS/BiCROS</b> (Pure 312 Nx Transmitter)	RIC	1	29,490
<b>CROS/BiCROS</b> (Silk Nx Transmitter)	CIC	1	29,990

Note:  
The fitting range is completely dependent on the receiver matrix of the hearing aid



Insio (ITE / ITC) Nx

Insio (CIC) Nx

Insio (IIC) Nx



**primax**  
All levels, all styles, all wireless.



Product Name	Form Factor	Channels	Fitting Range (dB)	Warranty (Years)	Unit Price (₹)
<b>primax</b>					
<b>MOTION P / SP px</b>					
Motion SP/P 7px	BTE	24 / 48	10 - 120	2	2,49,990
Motion SP/P 5px	BTE	24 / 32	10 - 120	2	1,54,990
Motion SP/P 3px	BTE	24 / 24	10 - 120	2	44,990
Motion SP/P 2px	BTE	16 / 16	10 - 120	2	39,990
Motion SP/P 1px	BTE	16 / 16	10 - 120	2	32,990
<b>PURE px</b>					
Pure 3px	RIC	24	10 - 115	2	44,990
Pure 2px	RIC	16	10 - 115	2	39,990
Pure 1px	RIC	16	10 - 115	2	32,990
<b>INSIO px</b>					
Insio 3px	CIC & ITC/ITE	24	10 - 110	2	44,990
Insio 2px	CIC & ITC/ITE	16	10 - 110	2	39,990
Insio 1px	CIC & ITC/ITE	16	10 - 110	2	32,990
<b>SILK px</b>					
Silk 3px	Click CIC	24	10 - 80	2	44,990
Silk 2px	Click CIC	16	10 - 80	2	39,990
Silk 1px	Click CIC	16	10 - 80	2	32,990
Product Name	Form Factor	Warranty (Year)		Unit Price (₹)	
<b>CROS/BiCROS</b>					
CROS/BiCROS Pure px Transmitter	RIC	1		24,490	

Note:  
The fitting range is completely dependent on the receiver matrix of the hearing aid



Product Name	Form Factor	Channels	Fitting Range (dB)	Warranty (Years)	Unit Price (₹)
<b>ESSENTIAL</b>					
<b>Intuis 3 RIC 312</b>	RIC	12	10 - 115	2	24,990
<b>Intuis 3 SP</b>	BTE	12	20 - 120	2	24,990
<b>Intuis 3 P</b>	BTE	12	10 - 110	2	24,990
<b>Intuis 3 M</b>	BTE	12	10 - 90	2	24,990
<b>Intuis 3 S</b>	BTE	12	0 - 80	2	24,990
<b>Intuis 3 Custom</b>	ITE / ITC / CIC	12	10 - 110	2	24,990
<b>Intuis 3 Click</b>	ITC / CIC	12	10 - 90	2	24,990
<b>BASIC</b>					
<b>Prompt SP</b>	BTE	8	20 - 120	2	18,490
<b>Prompt P</b>	BTE	8	10 - 90	2	18,490
<b>Prompt S</b>	BTE	8	0 - 80	2	18,490
<b>Prompt Custom</b>	ITC / CIC	8	10 - 110	2	18,490
<b>Prompt Click</b>	ITC / CIC	8	10 - 90	2	18,490
<b>Run SP</b>	BTE	8	20 - 120	2	15,490
<b>Run P</b>	BTE	8	20 - 120	2	15,490
<b>Run S</b>	BTE	8	10 - 90	2	15,490
<b>Run Click</b>	ITC / CIC	8	10 - 90	2	16,990
<b>Fun SP</b>	BTE	6	20 - 120	2	11,990
<b>Fun P</b>	BTE	6	10 - 90	2	10,990
<b>Fast P</b>	BTE	4	10 - 80	2	9,990

Note:  
The fitting range is completely dependent on the receiver matrix of the hearing aid



Intuis 3 (BTE)



Intuis 3 (ITE / ITC / CIC)



Intuis 3 (Click ITC)



Prompt (BTE)



Prompt (CIC)



Fun (BTE)

## Accessories for Hearing Aids

Product	Unit Price (₹)
<b>Remote Control and Accessories</b>	
StreamLine Mic	22,000
StreamLine TV	19,470
miniPocket	7,670

<b>Hearing Aid Zinc Air Batteries</b>	
Signia # 675 Battery (Mercury Free)	51
Signia # 13 Battery (Mercury Free)	51
Signia # 312 Battery (Mercury Free)	51
Signia # 10 Battery (Mercury Free)	51

<b>In-The-Ear (ITE) Fitting Accessories</b>	
Quick Guard Kit	530

<b>Receiver-In-Canal (RIC) Fitting Accessories</b>	
Receiver Mold	1,168
miniReceiver Waxguard Set (10 pcs)	650

<b>Behind-The-Ear (BTE) Fitting Accessories</b>	
Comfort Coupling Set (for Prompt, Run, Fun)	236
Simple Coupling Set (for Fast)	177
BTE Eartip Assembly (Eartip + Elbow + Tube)	118
BTE Eartip Joint Elbow (L-Bend)	41
BTE Eartip (Any Size)	59
BTE Hucki Holder (One Pair)	148
Colour Exchange Kit	1,522

<b>Miscellaneous Items</b>	
UV Hard Pocket / BTE Earmold	900
Silicon Soft Pocket / BTE Earmold	1,100
Custom Swim Plug	1,100
Drying Kit	150
Cleaning Kit	590

Product	Unit Price (₹)
<b>Earwear 2.0</b>	
<b>Domes</b>	
Click Dome Open (8mm, 10mm) (6pcs/blister)	932
Click Dome Closed (8mm, 10mm) (6pcs/blister)	932
Click Dome Double (8/10 mm, 10/12 mm) (6pcs/blister)	932
Click Dome Semi Open (6pcs/blister)	932

<b>Sleeves</b>	
Sleeves Vented (XS,S,M,L) (6pcs/blister)	1,168
Sleeves Closed (XS,S,M,L) (6pcs/blister)	1,168

<b>miniReceiver 2.0</b>	
S miniReceiver 2.0 (Sizes 0 - 3) <b>Left / Right</b>	5,890
M miniReceiver 2.0 (Sizes 0 - 4) <b>Left / Right</b>	5,890
P miniReceiver 2.0 (Sizes 0 - 3) <b>Left / Right</b>	5,890
HP miniReceiver 2.0 (Sizes 0 - 3) <b>Left / Right</b>	5,890

<b>Earwear 3.0</b>	
<b>Sleeves 3.0</b>	
Sleeves 3.0 Vented (XS, S, M, L) (6pcs/blister)	1,190
Sleeves 3.0 Closed (XS, S, M, L) (6pcs/blister)	1,190
Sleeves 3.0 Power (XS, S, M, L) (6pcs/blister)	1,190


<b>Eartips 3.0</b>	
Eartip 3.0 Open (5mm, 7mm, 10mm) (6pcs/blister)	790
Eartip 3.0 Tulip (8mm, 12mm) (6pcs/blister)	790

<b>Thin Tube 3.0</b>	
Set Thintube 3.0 (S0, S1, S2, S3, S4) (Set of Left & Right)	490
Set Thintube 3.0 P (S0, S1, S2, S3, S4) (Set of Left & Right)	490

<b>miniReceiver 3.0</b>	
S miniReceiver 3.0 (Sizes 0 - 4) <b>Left / Right</b>	5,890
M miniReceiver 3.0 (Sizes 0 - 4) <b>Left / Right</b>	5,890
P miniReceiver 3.0 (Sizes 0 - 4) <b>Left / Right</b>	5,890
HP miniReceiver 3.0 (Sizes 0 - 4) <b>Left / Right</b>	5,890

## App, accessories and hearing aid compatibility

This overview shows you which apps and accessories work with our hearing aids. Depending on the solution your customers choose, they can even enhance their hearing experience and convenience with this well-matching portfolio.

Hearing aid	Signia app	CROS/ BiCROS	Streamers and transmitters	Remote controls	Portable charger	Inductive Charger II	Standard Charger	Dry&Clean Charger
								
Styletto AX	●	● <sup>G</sup>	● ●	●	●	-	-	●
Insio AX	●	● <sup>H</sup>	● ●	●	-	-	●	-
Pure Charge&Go AX	●	● <sup>H</sup>	● ●	●	●	-	●	●
Pure Charge&Go T AX	●	● <sup>H</sup>	● ●	●	●	-	●	●
Pure 312 AX	●	● <sup>H</sup>	● ●	●	-	-	-	-
Intuis 4	●	●	● <sup>J</sup> ● <sup>J</sup>	●	-	-	-	-
Active Pro	●	-	● ●	●	●	-	-	-
Motion Charge&Go X	●	● <sup>I</sup>	● ●	●	-	●	-	-
Motion Charge&Go P X	●	● <sup>I</sup>	● ●	●	-	-	●	●
Motion Charge&Go SP X	●	● <sup>I</sup>	● ●	●	-	-	●	●
Styletto X <sup>1</sup>	●	-	● ●	●	●	-	-	-
Silk X	●	● <sup>G</sup>	- -	●	-	-	-	-
Pure Charge&Go X	●	● <sup>I</sup>	● ●	●	-	●	-	-
Pure 312 X	●	● <sup>I</sup>	● ●	●	-	-	-	-
Styletto Connect	●	-	● ●	●	●	-	-	-
Pure 10 Nx	●	-	- -	●	-	-	-	-
Pure 312 Nx	●	● <sup>A</sup>	● ●	●	-	-	-	-
Pure 13 Nx	●	● <sup>A</sup>	● ●	●	-	-	-	-
Pure Charge&Go Nx	●	● <sup>A</sup>	● ●	●	-	● <sup>B</sup>	-	-
Motion 13 Nx	●	● <sup>A</sup>	● ●	●	-	-	-	-
Motion 13P Nx	●	● <sup>A</sup>	● ●	●	-	-	-	-
Motion Charge&Go Nx	●	● <sup>A</sup>	● ●	●	-	● <sup>B</sup>	-	-
Silk Nx	●	● <sup>C</sup>	- -	●	-	-	-	-
Insio Nx	●	● <sup>E,F</sup>	● <sup>D</sup> ● <sup>D</sup>	●	-	-	-	-
Intuis 3	●	-	- -	●	-	-	-	-
Intuis 3 RIC 312	●	-	- -	●	-	-	-	-
Prompt	●	-	- -	●	-	-	-	-
Run	●	-	- -	-	-	-	-	-

A) Compatible with CROS Pure 312 Nx or CROS Pure Charge&Go Nx

B) Compatible with the Pure Charge&Go/Motion Charge&Go/Cellion charger

C) Compatible with CROS Silk Nx

D) Compatible with Bluetooth-enabled Insio Nx ITC / ITE

E) Insio Nx IIC and CIC are compatible with CROS Silk Nx

F) Bluetooth enabled Insio Nx ITC and ITE are compatible with CROS Pure 312 Nx

G) Compatible with CROS Styletto AX

H) Compatible with CROS Pure C&G AX and CROS Pure 312 AX

I) Compatible with CROS Pure C&G X and CROS Pure 312 X

J) Non Compatible with Intuis 4.0



**Scan to download Signia App**

Sivantos India Pvt. Ltd.  
Salarpuria Magnificia Phoenix, 4<sup>th</sup> Floor, Dooravani Nagar, K. R. Puram, Bengaluru - 560016, India  
Tel.: +91 75300 47474  
Email: [customercare.in@sivantos.com](mailto:customercare.in@sivantos.com)

Find us on:  
[www.signia.net/en-in](http://www.signia.net/en-in)



[www.youtube.com/signiahearing/](http://www.youtube.com/signiahearing/)



[www.facebook.com/signiaindia/](http://www.facebook.com/signiaindia/)



[www.instagram.com/signiahearingindia/](http://www.instagram.com/signiahearingindia/)

The information in this document contains general descriptions of the technical options available, which do not always have to be present in individual cases and are subject to change without prior notice. The required features should therefore be specified in each individual case at the time of conclusion of the respective contract. Android and Google Play are trademarks of Google Inc. Apple App Store is a trademark of Apple Inc.